

# KAB'RAQÄN

K'o b'ey re' ri loq'oläj ulew nsilon b'a'. K'o k'a chuqa' b'ey re' ri winaqi', ri jay, ruha' ri qak'u'x nketzelaj ki'.

Xaruma k'ari' toqnaqaya' apojun ka'i' oxi' na'oj richin awetaman achike nab'an we ke ta ri'.

## RI MAJANI TOK'ULUN, TOQ NAJIN CHUQA' K'A TOQ XIK'O YAN

### Jun kab'raqän

Re jun ka'i' na'oj re' tikirel nuköl ak'aslem chuqa' k'a kichin ri awach'alal, chuqa' richin ye'achajij ri awachoch chuqa' ri jalajöj chuxtäq we kan ta k'o jun kab'raqän.

### ¿ANA'ON APO AWI'?



Tiqana' apo qi' qonojel chwäch jun kab'raqän





# KAB'RAQÄN

Qetaman k'a chi man tik'asäs  
ta, jun k'ayewal chuqa'  
nk'ulwachitäj pa xab'i achike  
na tinamital richin  
ri Iximulew, xa  
ruma k'a ri' toq  
k'o chi qetaman  
ri achike k'o chi  
nqab'än.



Tiqana' apo qij' qonojel chwäch jun kab'raqän

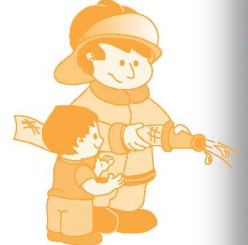
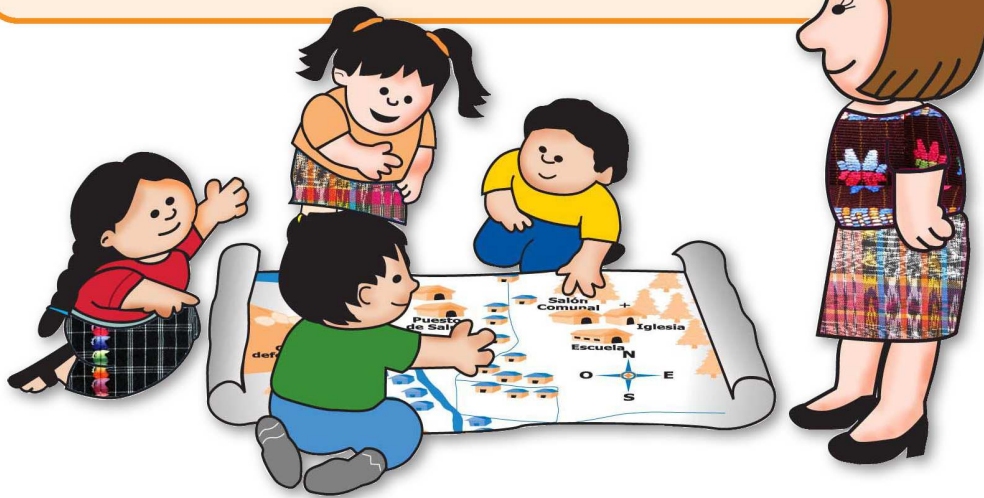
# TAQ K'A MAJANI' TOQA RI

## KAB'RAQÄN

K'atzinel k'a nqajikib'a' kik'ojlem ri qach'alal, chuqa' k'a qachajin ri mb'eruch'ojji toqnoqajun kab'raqän, k'o k'a chi nqab'än apo ruk'ojlen ri:

- ✓ Jun runuk'ulem rub'eyal, richin k'a we kan xtype jun kab'raqän qetaman k'a akuchi' xqub'e wi chuqa' k'a xqujel we tikirel ta\*.
- ✓ Jun peqës ri chojpan aya'on ta k'a awaq'on richin tikirel nawil k'a kolob'äl aq'omanik, rokkik yeb'e apon ri aq'omanela'.
- ✓ Tab'ana' k'a kan anab'al pa ruwi' kiway kuk'iya' ri awach'alal, xa xe tatz'eta' chi man nch'amär.
- ✓ Tab'ana' k'a kan anab'al pa ruwi' jun wo'o' tzuy aya'.
- ✓ K'o ta k'a jun talutzij oyonib'äl, kan k'o ta k'an ruway chupam, ri man janipe' k'ayew nawejqaj.
- ✓ Saqib'äl ri k'o ta k'a kan chuqa' ruway chupam.
- ✓ Ütz ta k'a k'o kan ruk'ojlen xtaq peqës, läq ri man ye'ax, xaxläj taq q'u'j chuqa' wuj richin yab'e pa ruxikin jay.
- ✓ Xajab' ri tikirel nawokisaj chi aninäq chuqa' k'a ri man nujuy awaqän.

Jun runuk'ulem na'oj kichin ri awach'alal, chuqa' k'a rinuk'u' iwi' pa ri itinamit, richin k'a ke ri' junan nina' qa iwi' chi wäch.



\* Katoyon k'a pa ri 1566, richin nak'utuj na'oj pa ruwi' ri runuk'ulem n'oj





Man tamestaj chi ri k'o chi nab'an apo ruk'ojlem ja re k'o wawe'

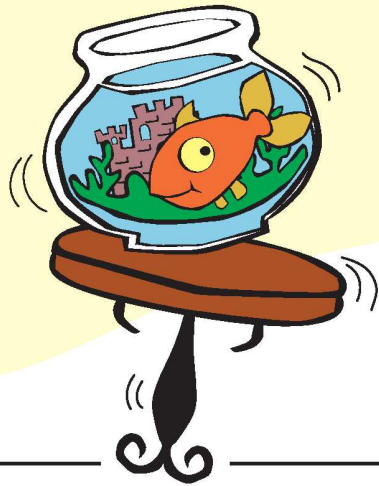
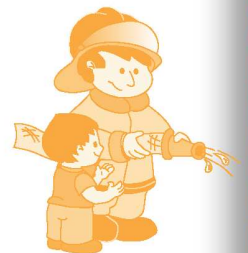


- ✓ Tiqaya' rejqa'lem chuqa' tiqak'olo' kan qab'ey ri akuchi' ta aninäq yojel pe pa qachoch.
- ✓ We nijäch ta iwi', tik'amon niya' kan chiwäch ri akuchi' nimol we iwi' toq xik'o ri k'ayewal.
- ✓ Janpetäq na k'a b'a' titojtob'ela' ri k'o chi nib'an richin ker' iwonojel iwetaman achike nib'an.



**K'o k'a chi jikib'an kik'ojlem ri:**

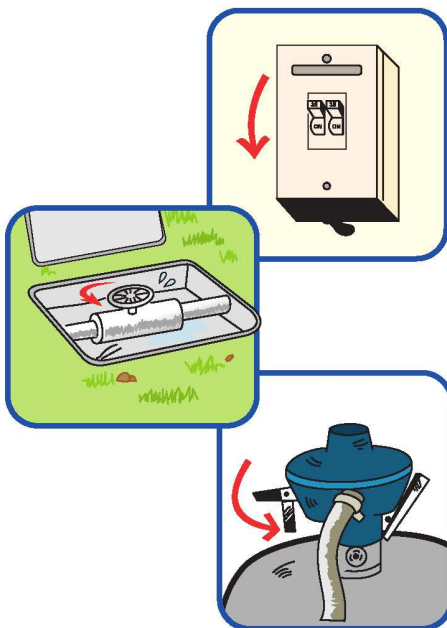
- Weqoj ri e al,
- Lem
- Nima'aq taq saqib'äl
- Kotzib'äl
- Chuqa' ri yakb'äl e tzeqel chuqa' k'a ri kitelelon ki'.



**K'atzinel k'a chuqa' qetaman**

**AKUCHI' E K'O WI RI:**

- Ri tz'apeb'äl ri ya'
- Ri tz'apeb'äl ri wosq'aq'b'äl
- Ri k'ojlib'äl richin naqasaj ri saqib'äl



Richin k'a ye'atz'apixtaj chuqa' naqasaj toq k'o jun k'ayewal.

Tiqana' apo qi' qonojel chwäch jun kab'raqän





# TOQ NAJIN

Qonojel nqaxib'ij qi' toq  
npe ri kab'raqän, xa xe we  
kab'anon kan qanab'al  
tikirel k'a nqasäch ri xib'iri'il...  
chuqa' we qetaman achike  
nqab'än.



Tiqana' apo qi' qonojel chwäch jun kab'raqän

Ri k'o chi nqab'än

# TOQ NAJIN

Ri kab'raqän

- Wi at k'o pajay, man karakek, taju' k'a awi' chi ruxe' jun ch'atal, tachapapej k'a. Chuqa' tikirel yapa'e' pa jun ruchi' jay ri k'ow natz'et, chuqa' chuqa' tikirel nalatz'atz'ej awi' pa jun tz'ik ri jay.



- Man kak'oje' chi runaqaj jun saqib'äl chuqa' lem, chi runaqaj ri yakb'äl taq läq chuqa' xekixikin ri chuxtäq ri xa yeb'etzaq pe chawij, man k'a k'oje' naqaj chi re q'aa' chuqa' k'a ri akuchi' yab'etzaq ta pe chuqa' njllil ta.

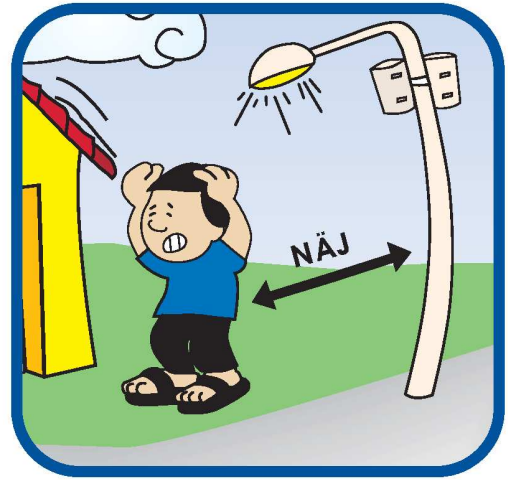


Tiqana' apo qi' qonojel chwäch jun kab'raqän

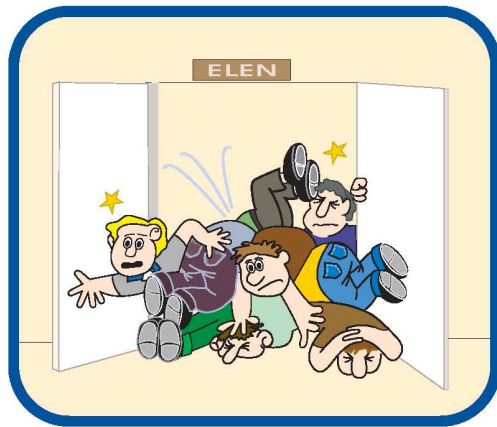
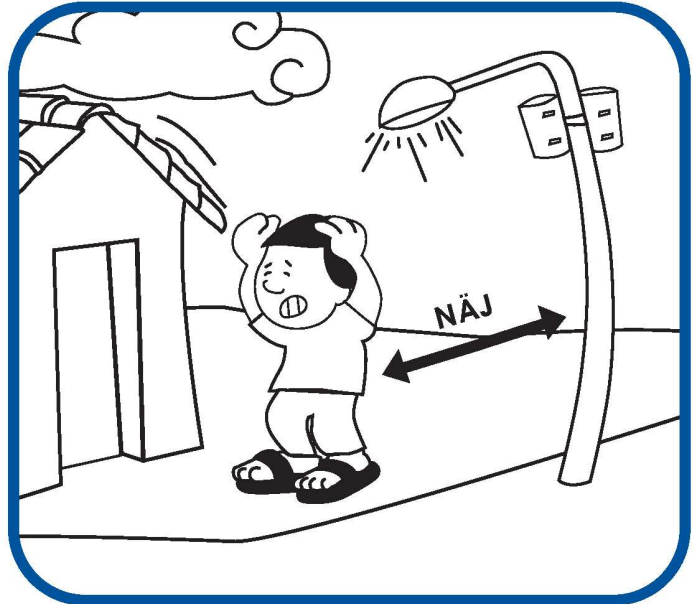




... We man at k'o ta pa awachoch, k'a k'oje' k'a pa ri xoral ri akuchi' manäq achike nb'etzaq pe chawij. Man k'a kak'oje' ok chi runaqaj jun xan, ul, nima'q taq jay, che', raqän taq saqib'äl chuqa' kichin ri oyonib'äl.



TAB'ONIJ



... We at k'o pa jun xoral akuchi' e k'o k'i'y winaqi', man katanin pa ruchi' jay, man karakek. Takanoj k'a jun akuchi' natob'ej wi awi', achi'el ri xb'itej yan kan.



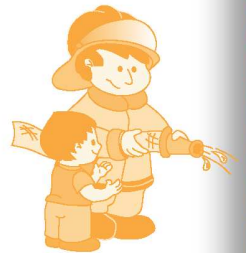




— Wi at k'o pa mama' taq kaweq taq jay, man kapa'e' ok chi ruchi' ri saqib'al, chuqa' akuchi' e k'o ta chuxtäq ri etzeb'an chuqa' chi runaqaj ri xa yeb'etzaq ta pe chawij.



Takanoj k'a ri akuchi' jujik yak'oje' wi



— Man karakek, tawoyob'ej to'ik, ruma xtib'e ri saqil, k'a ri' k'a:

- Nchup ri q'aa'.
- Yechup k'a ri reqe'etal.
- Yepa'e' k'a ri tzeqeq'a'n.





We atb'enäq pa ch'ich':

- Tapab'a' k'a ri ch'ich' chi ruchi' ri b'ey, man k'a kak'oje' kan naqaj chi nima'q taq jay, chuqa' ri ruk'amal ri saqil.
- Man katik'o' chi kixe' q'a'n.
- Man kapa'e' ok chi ruxe' tanatik, ma xa xtipe ul chawij.

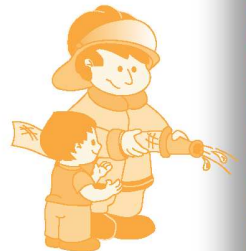


Tiqana' apo qi' qonojel chwäch jun kab'raqän

## TAQ XIK'O YAN RI KAB'RAQÄN

K'o re' man yatikir ta naq'et  
ri axib'iri'il toq k'o kab'raqän,  
k'atzinel k'a natzijoj apo we  
xaxib'ij awi', man kak'ix, chuqa'  
tiq'ejela' iwi'.

*Man tamestaj chi k'o nim rejqalen ri*  
ab'anon kan anab'al!



Tiqana' apo qi' qonojel chwäch jun kab'raqän

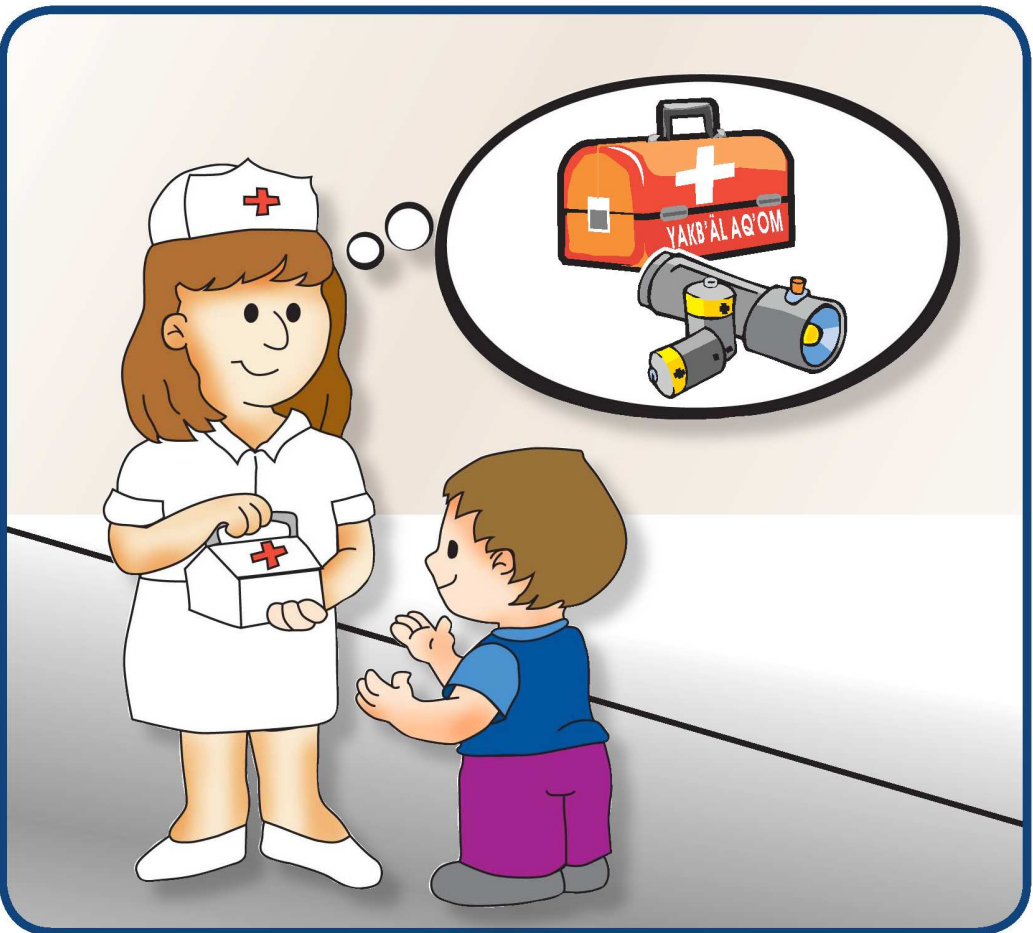




Kixtzijon k'a chiwäch, titzjioj k'a achike xina', richin nikuqub'ala' iku'u'x.

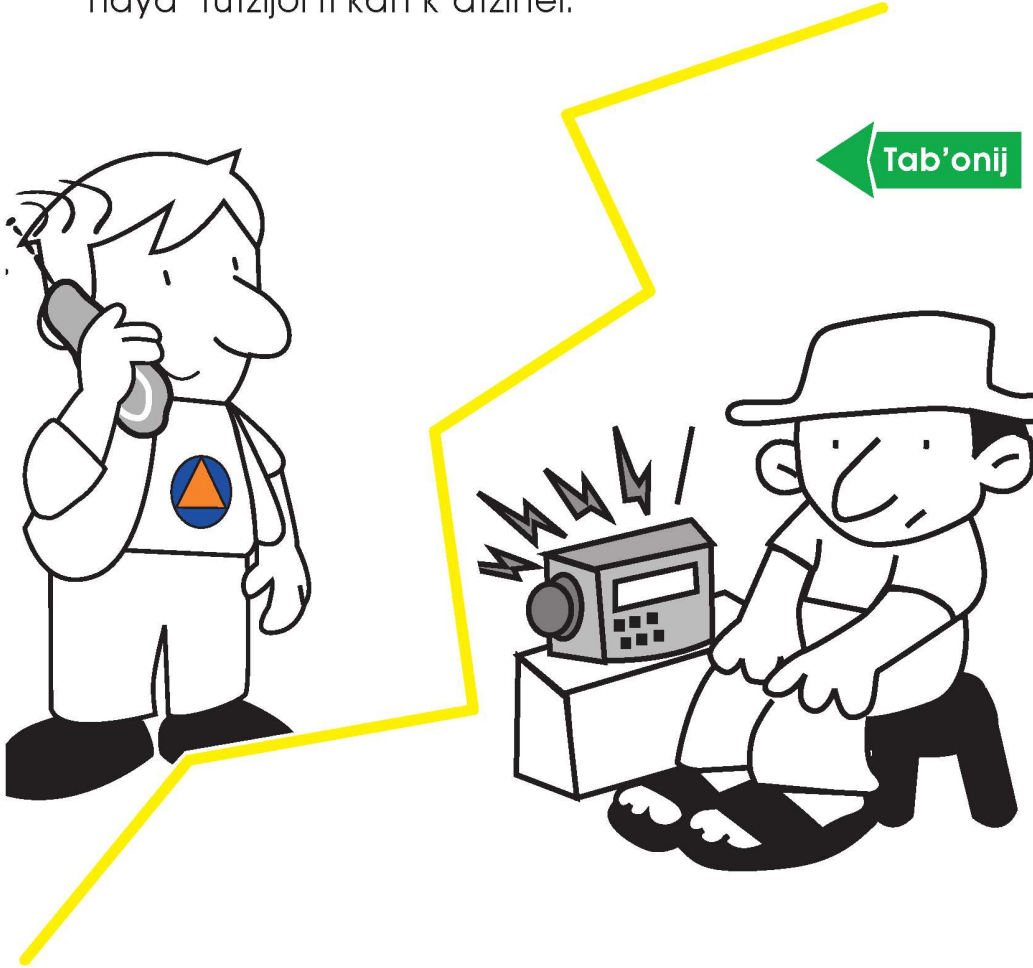
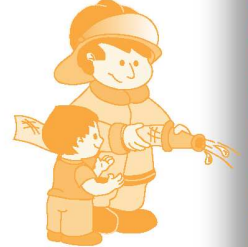


We k'o winaqi' ri kisokon ki' chuqa' kikajin ki' ke'ato'.

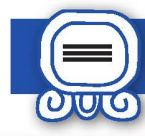


Tiqana' apo qi' qonojel chwäch jun kab'raqän

- We ri sokotajik kan nim, k'o chi nikwaxtex ri winäq pa jun aq'omab'äl jay, we manäq toyox jun aq'omanel.
- Tatzija' k'a ti talutzij richin nawak'axaj ri rutzijol achike nk'ulwachitäj chuqa' k'a ri rutzijol na'oj nya'ox koma ri k'amöl taq b'ey.
- Tawokisaj k'a ri oyonib'äl xa xe richin naya' rutzijol ri kan k'atzinel.

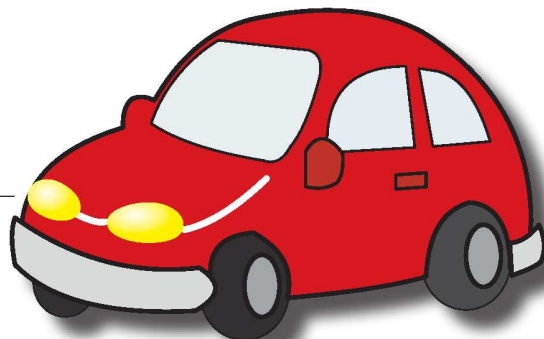


Tab'onij





... We k'o ch'ich' achajin, xa xe tawokisaj to kan k'atzinel.



— Tawokisaj axajäb' richin ye'atob'ej ri awaqän.



— Tanik'oj k'a ri rutz'ap eb'äl ri q'aq'b'äl, richin nanik'oj we manäq jaqäl chuqa' ntel ta ri q'aq'b'äl.

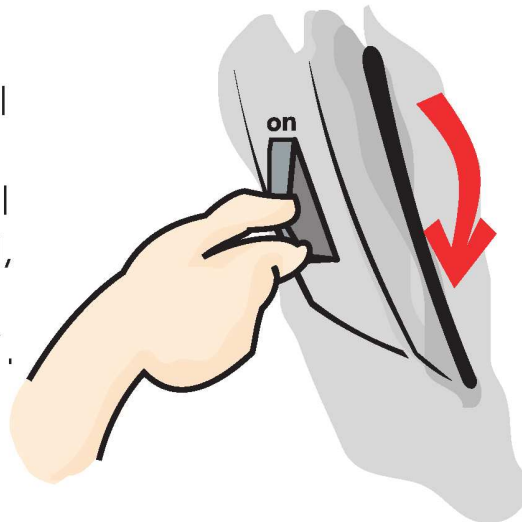


Wi naseq ruxla' ri q'aq'b'äl tatz'apextaj aninäq, ke'ajaq' k'a ri saqib'äl.



- ☹️ Tanik'oj k'a ri ruk'amal ri saqib'äl.

Man k'a k'oje' ok naqaj chike ri ruk'amal ri saqib'äl, we k'ojpitajnäq ri ruk'amal ri saqib'äl, k'o k'a saqil, taqasaj k'a ri ruch'itul, man xa xtuchop q'aa'.



- ☹️ Tanik'oj k'a, we manäq k'ayewal pa awachoch.

- ☀️ Tatz'eta' ruwi' ri awachoch we üt'z rub'anon.
- ☀️ Tatz'eta' we ri xan man kijerin ki', man eq'ajnäq, chuqa' k'a man xa k'o elenäq pe chi re ri xan.
- ☀️ Pa ri awarab'al, taje'ch'uj k'a ri ach'at chi runaqaj ri chuxtäq ri yalan e al.
- ☀️ Tatz'eta' we üt'z tuk'ojlem ri saqib'äl, ri weqoj je', ri lem, ri jalajöj taq yakb'äl wi jkil e k'o.



- ☀️ Richin k'a manäq k'afik nb'etz'ukutäj pe, tawelesaj k'a el pajay ronojel ri ya' kib'anikil ri nkichöp ta q'aa' (b'onib'äl, q'aa'b'äl, chuqa' ruway ri ch'ich'.





# MAN TAMESTAJ CHI...

We natzeqelb'ej ri na'oj ri k'o chi nab'än

## TAQ K'A MAJANI' TOQA, TAQ NAJIN CHUQA' K'A TAQ XIK'O YAN

Jun **KAB'RAQÄN**, tikirel k'a nakol ri ak'aslem chuqa'  
k'a ri kichin ri awach'alal.

## ¡QONOJEL k'a nqana' apo qi' rik'in ri qanab'al!

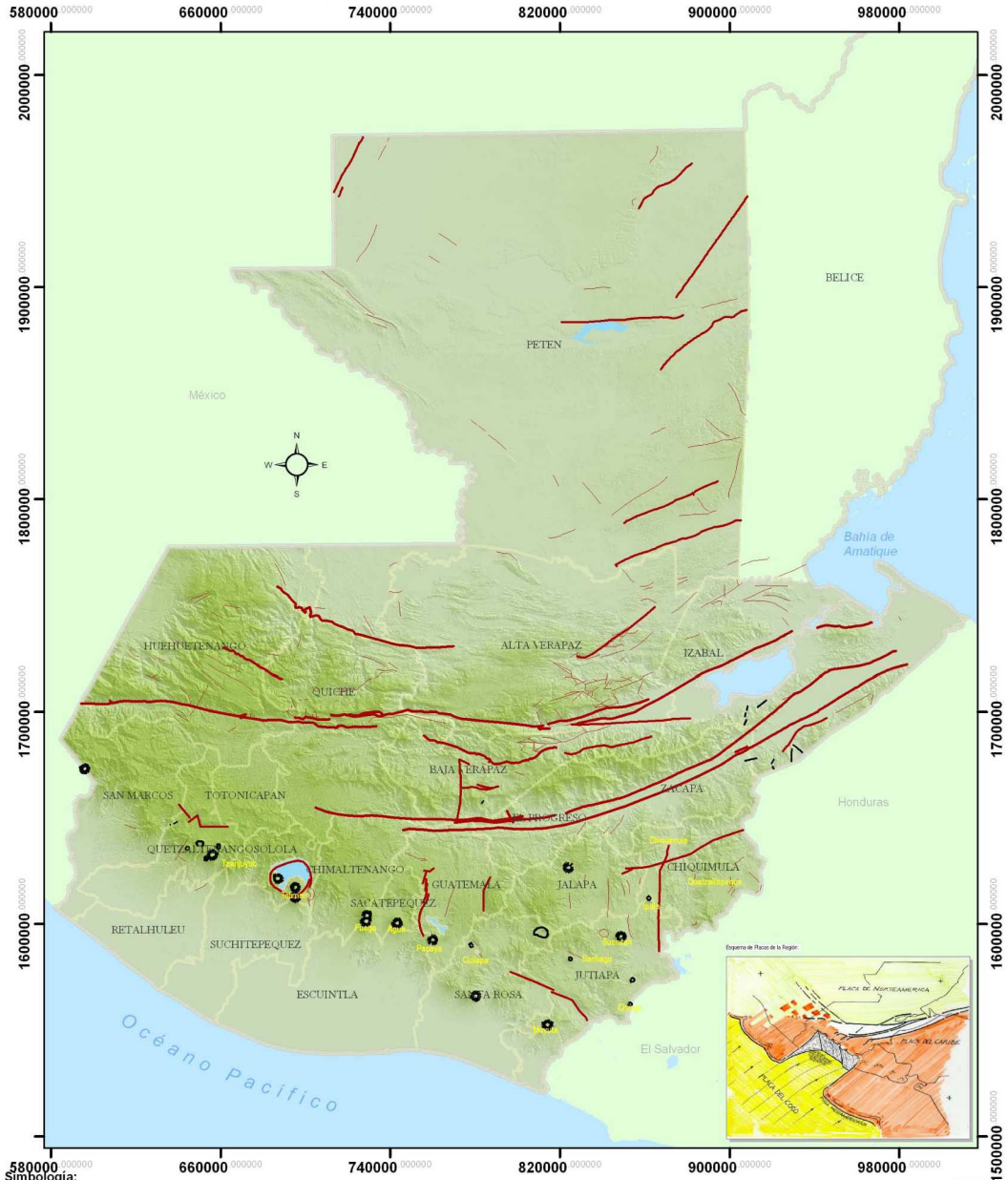
- Jantape' k'a tik'oje' runuk'ulem na'oj, richin awetaman achike xtab'än.
- Tatojto'ela' k'a ri anojin chi tikirel nab'än chwäch jun k'ayewal.



Tiqana' apo qi' qonojel chwäch jun kab'raqän



# RULEWAL KAB'RAQÄN PA RI IXIMULEW



- 580000**  
**Simbología:**
- Falla Volcánica
  - Cuerpos de Agua
  - Falla de 3er. Orden
  - Falla de 2do. Orden
  - Falla de 1er. Orden

- Limite Internacional
- Cuerpos de Agua
- Limite Departamental
- Volcanes



Fuente:  
 - Ministerio de Agricultura Ganadería y Alimentación - MAGA- (Cartografía)  
 - Instituto Nacional de Sismología, Vulcanología, Meteorología e Hidrología (Infografía)  
 - Departamento de Sistemas de Información Geográfica SE- CONRED, Guatemala Febrero del 2007 (Edición)



**TITZ'ETA' K'A JEB'ËL CHUQA' TITZIJOJ K'A RI RE-  
JQALEN RI ANA'ON APO AWI' RIK'IN RI ANAB'AL.**